

**Manitoulin-Sudbury District Services Board
POLICY & PROCEDURES MANUAL**

| | |
|--|-------------------------------|
| Section: G. Emergency Medical Services | Effective Date: March 1, 2010 |
| Topic: 8. Occupational Health and Safety | Replaces: New |
| Subject: 4.9. Traffic Safety | |
| Policy No. G.8.4.9. | Page 1 of 2 |

PURPOSE

To outline safe workplace processes to ensure paramedic safety while providing patient care on roadways.

APPLICATION

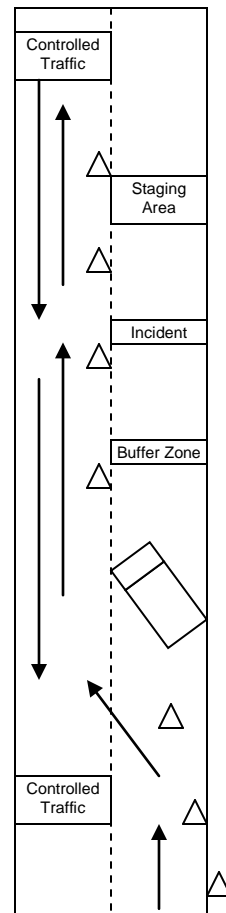
Paramedics, EMAs, Management

PROCEDURE

- 1) Ensure that protective equipment and protective devices are worn when required as indicated by this manual.
- 2) Lighting
 - Primary Emergency Lighting are to be used,
 - Secondary lights are not to be utilized unless traffic is controlled by police.
 - Strobe lights should not be utilized when parked
- 3) Parking / Securing the Scene

Scene securement is a joint effort of allied agencies and is a progressive activity based on the response of allied agencies, severity of the incident and location of the incident. This policy provides guidelines for paramedic safety. Securing the scene is ultimately the responsibility of the local police department.

- The preferred emergency vehicle to be used as “Blocker” to protect the scene and EMS personnel should be Fire Department Apparatus and placed at least 30 metres from the actual working area situated in a way to protect from the flow of traffic and angled so as to not forward into the safety zone if hit from behind.
- The first ambulance on a scene will:
 - be parked between a blocker vehicle and the actual incident if an appropriate blocker vehicle is on-scene,
 - be parked on an angle, in a manner so that it is used as a blocker vehicle if an appropriate Fire Apparatus blocker vehicle is not on-scene,
 - have it's parking brake engaged



| Manitoulin-Sudbury District Services Board POLICY & PROCEDURES MANUAL | |
|--|-------------------------------|
| Section: G. Emergency Medical Services | Effective Date: March 1, 2010 |
| Topic: 8. Occupational Health and Safety | Replaces: New |
| Subject: 4.9. Traffic Safety | |
| Policy No. G.8.4.9. | Page 2 of 2 |

- Vehicles should be parked in the same lane as the incident if possible as to not impede traffic,
- The second and other ambulances are to be parked in a way as to be protected by the blocking vehicle and within proximity of the incident (staging area).
- Traffic cones / reflectors / flares (consider fire hazards) may need to be placed to provide a lateral buffer and to provide early warning of a lane closure (allied agency).
- Traffic flow around the incident may need to be controlled (allied agency).

| |
|------------------|
| REFERENCE |
|------------------|

The Ontario Fire Service Health and Safety Advisory Committee, 2009, *Guidance for Improving Health & Safety in the Fire Service, Fire Fighters Guidance Note # 6-10*, Ontario Ministry of Labour

Manitoulin-Sudbury District Services Board, *Paramedic Safety Equipment*, Policy and Procedure G. 8.5.3.